



START-UP CHILE

PROGRAMS & OFFER

sergio@startupchile.org



WE ARE **THE FIRST PUBLIC** **ACCELERATOR OF** **THE WORLD**



24 **STUDY**
CASES

Including
MIT, STANFORD, HARVARD,
OCDE, PUC.

What are we looking for in the startups we accelerate?

1



TECH-BASED

2



INNOVATION

3



SCALABILITY

4

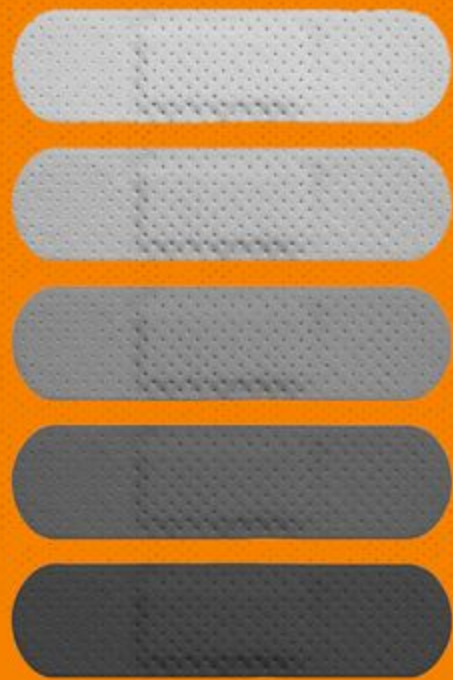


IMPACT

WE ARE AGNOSTIC TO
INDUSTRIES



WE ARE AGNOSTIC TO
NATIONALITIES



2363 STARTUPS IN
OUR PORTFOLIO

5214 ENTREPRENEURS
SUPPORTED



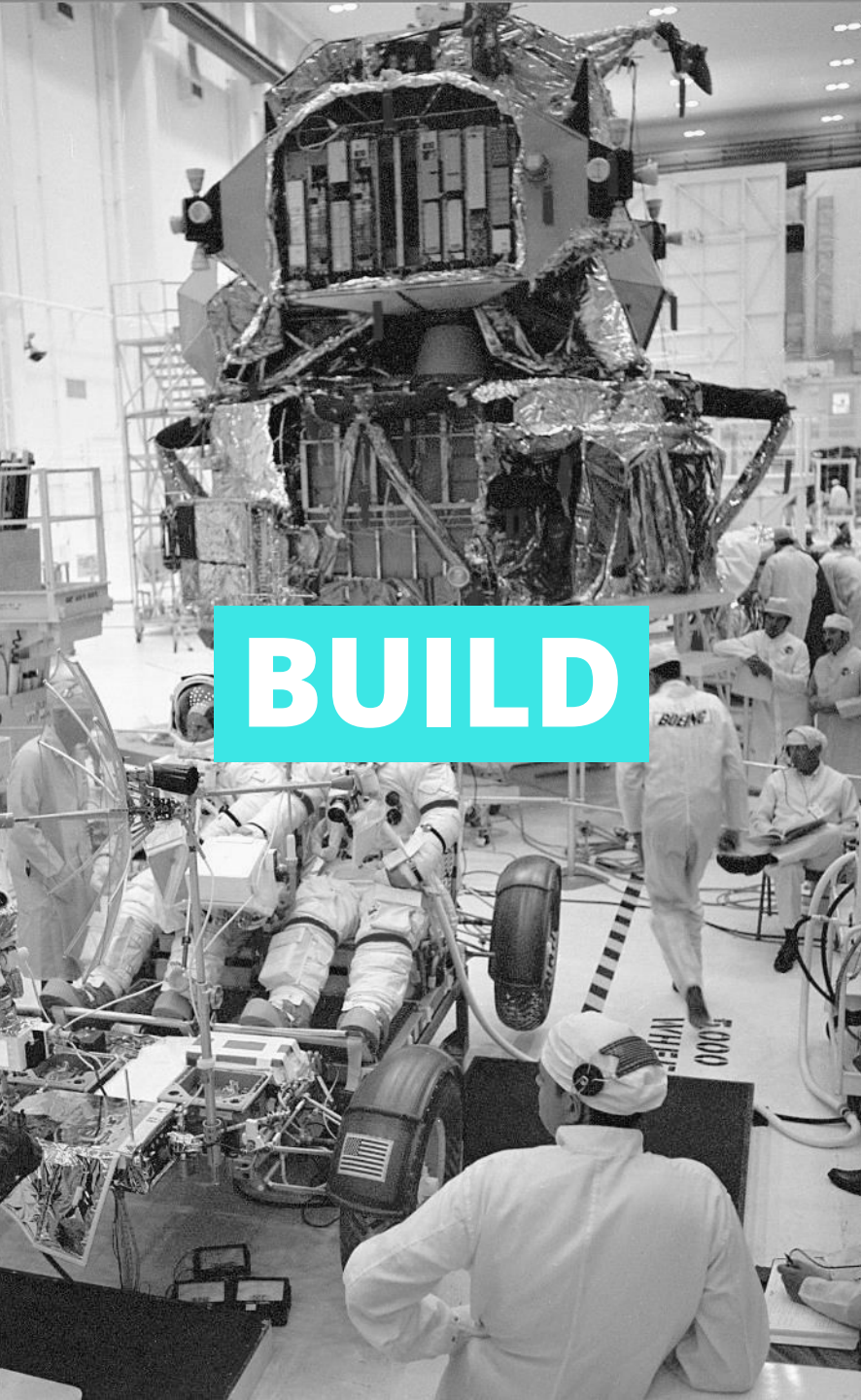


Our
PROGRAMS

THINK

BIG

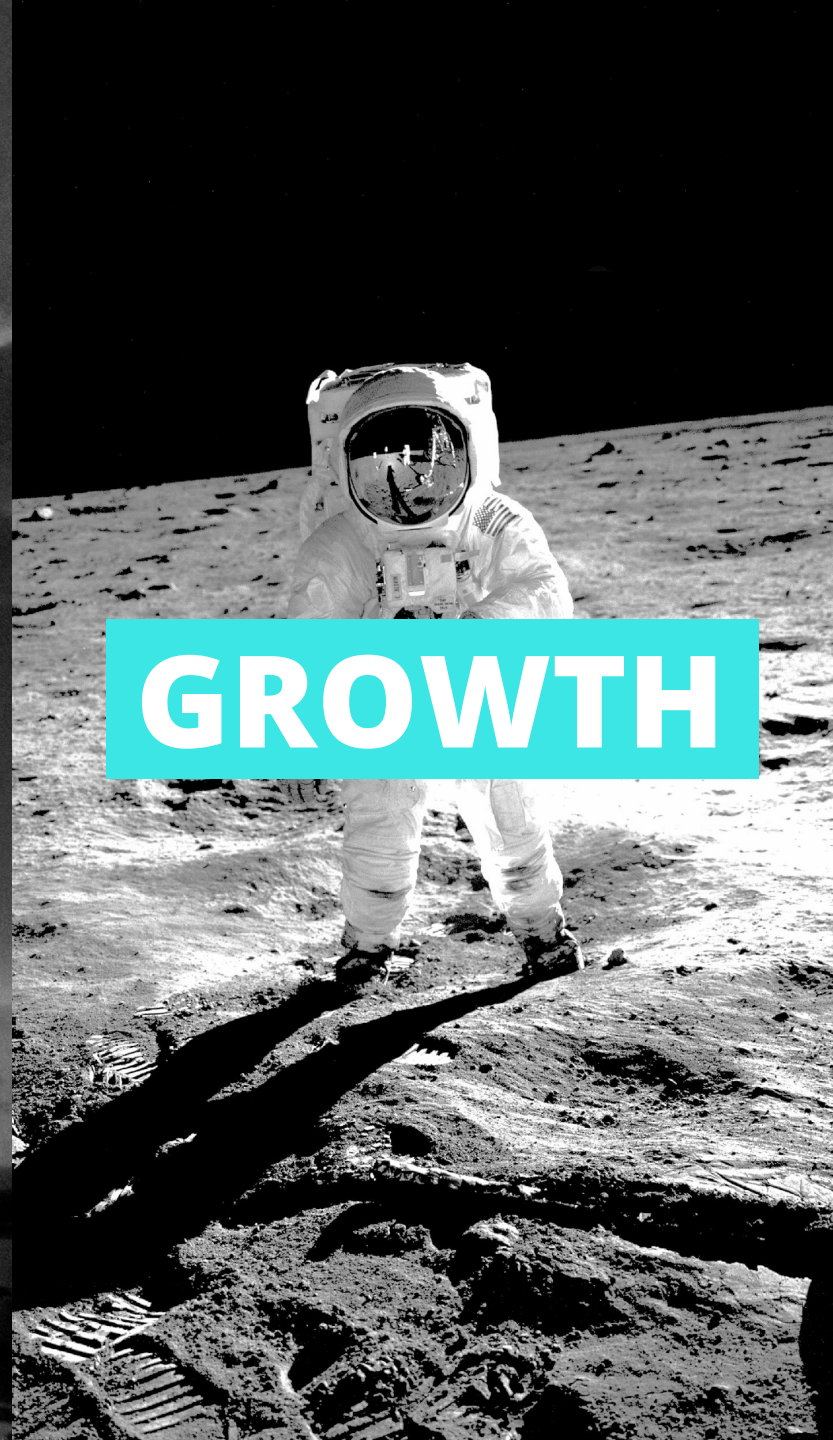




BUILD

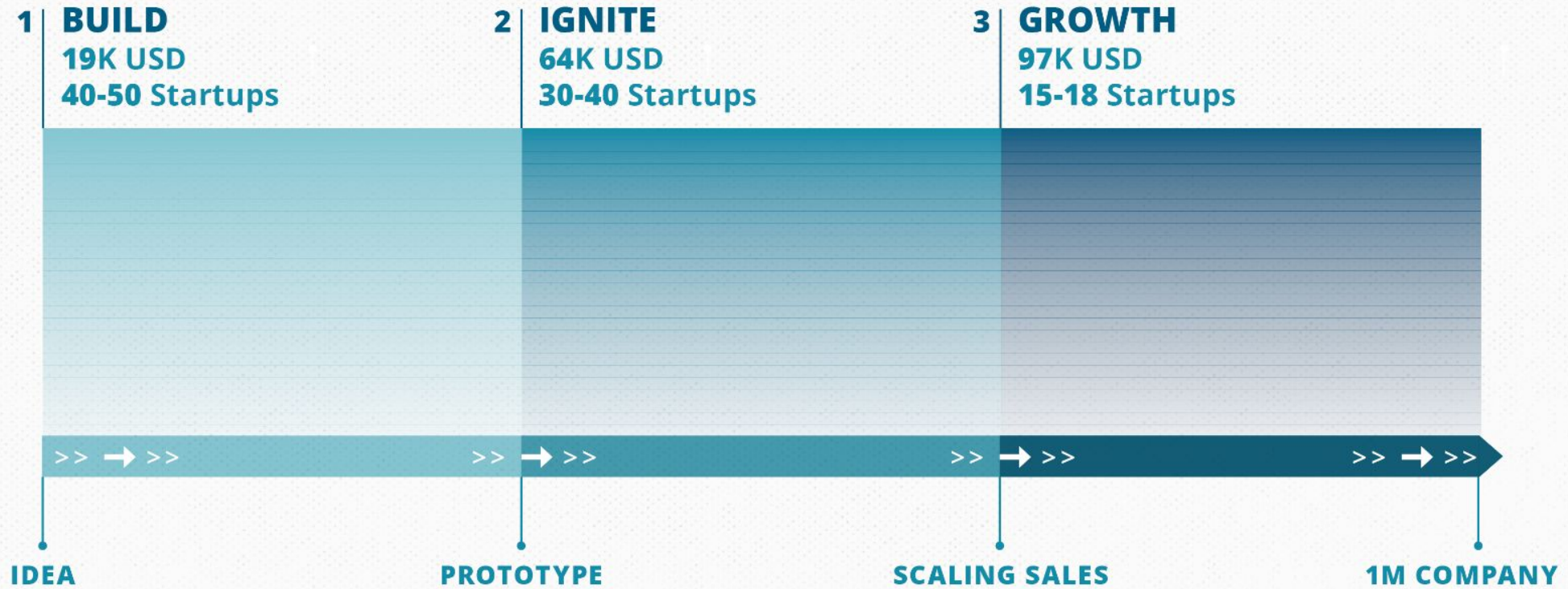


IGNITE



GROWTH

OUR PROGRAMS

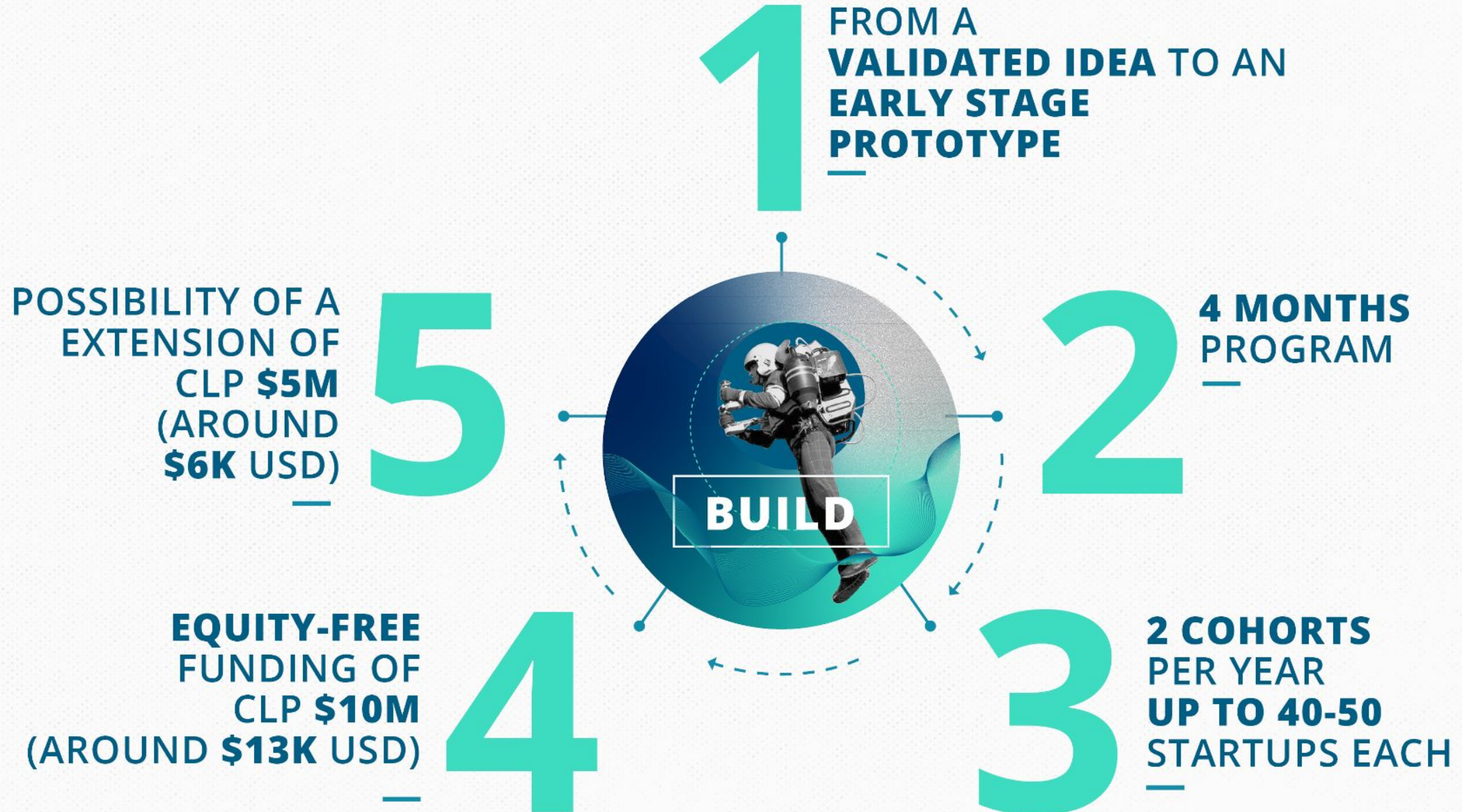


OUR PROGRAMS



PRE-ACCELERATION

Program for early stage startups.
At least 50% led by female founders.



Criteria to qualify to

BUILD

- 1| **THE TEAM LEADER** must be +18 years old.
- 2| **THE TEAM LEADER** must have an exclusive dedication to her startup (full-time job).
- 3| **THE COMPANY** must be tech-based with a scalable solution.
- 4| **THE COMPANY** must have been created at most 12 months ago before the application opens. If you apply as a legal person, the 12 months will be counted from the date of the legal incorporation of the company. If you apply as a natural person, the 12 months will be counted from the moment when you started commercial validation of your product/service (market approach, interviews, potential clients, launch of websites/social media, etc).
- 5| **THE TEAM LEADER** has to settle in Chile at least throughout the whole duration of the program or until you've spent the entire grant (typically around 5 months).
- 6| If you win the **\$5M CLP EXTENSION**, then you **MUST STAY IN CHILE** until you've also spent the extension money (typically 3 more months).
- 7| **THE TEAM LEADER** cannot be changed after the application is completed, so please make sure to choose the right person.
- 8| Each cohort slightly varies in its Terms and Conditions; make sure to read the ones created for the call you're applying to [here](#). (Specific T&Cs are available around 1 week before the application process open)

OUR PROGRAMS



ACCELERATION

program for startups with a functional product and early validation.



Criteria to qualify to

IGNITE

- 1| **THE STARTUP** must have at least a functional product or service.
- 2| **TEAMS** with complementary skills have much better chances of being selected, but you can apply as a sole founder.
- 3| **THE TEAM LEADER** must have an exclusive dedication to her/his startup (full-time job).
- 4| **THE TEAM LEADER** must be a founder (owns more than 10% of the company).
- 5| **THE COMPANY** must have been created at most 3 years before the applications open and If you apply as a legal person, the 3 years will be counted from the date of the legal incorporation of the company. If you apply as a natural person, the 3 years will be counted from the moment when you started commercial validation of your product/service (market approach, interviews, potential clients, launch of websites/social media, etc).
- 6| **THE TEAM LEADER** has to settle in Chile throughout the whole duration of the program or until you've spent the entire grant (typically 5 months).
- 7| If you win the CLP 25M extension, then you must stay in Chile until you've also spent the extension money (typically 7 months more).
- 8| **THE TEAM LEADER** cannot be changed after the application is completed, so please make sure to choose the right founder.
- 9| Each cohort slightly varies in its Terms and Conditions, make sure to read the ones created for the call you're applying to here. (Specific T&Cs are available around 1 week before the application process open).

OUR PROGRAMS



SCALE

program for the expansion of consolidated innovative tech-based businesses.

**EQUITY-FREE
FUNDING OF
CLP \$75M
(AROUND \$97K USD)**

4

1

**STARTUPS IN
EXPANSION
STAGE**



**2 COHORTS
PER YEAR
15 UP TO 18
STARTUPS
PER COHORT**

3

2

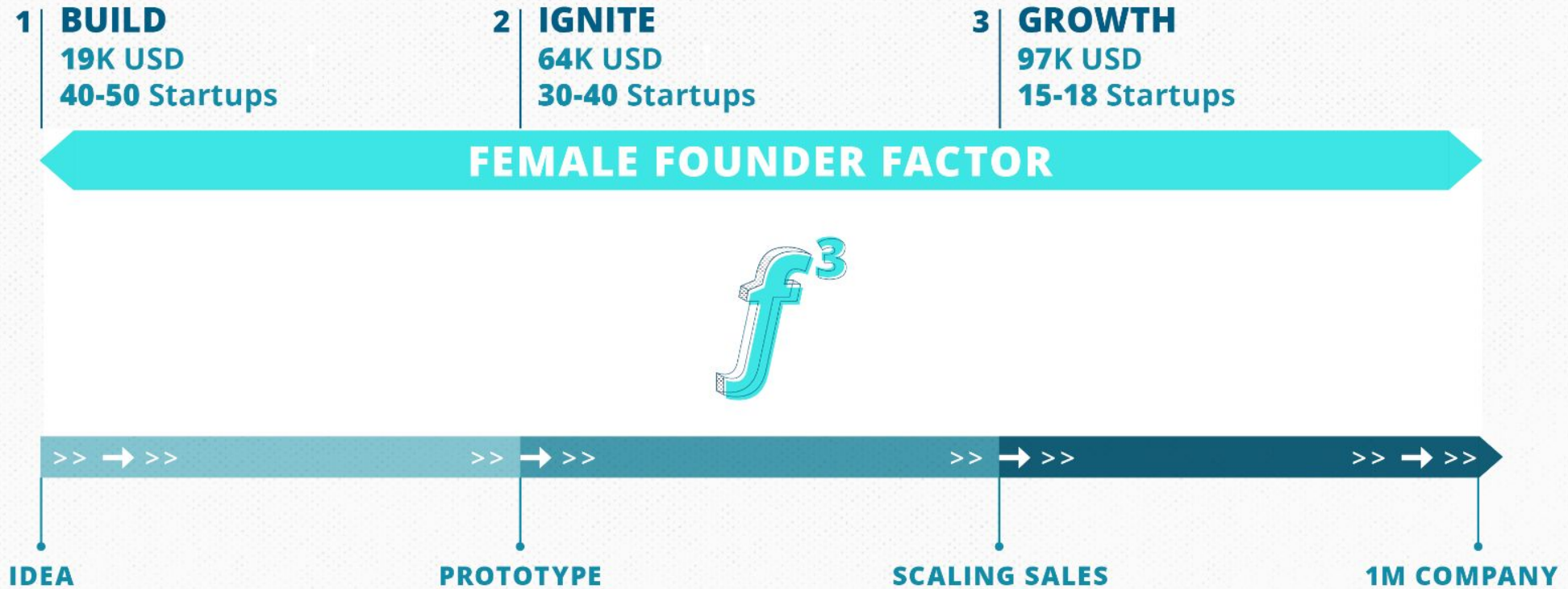
**8 MONTHS
PROGRAM**

Criteria to qualify to

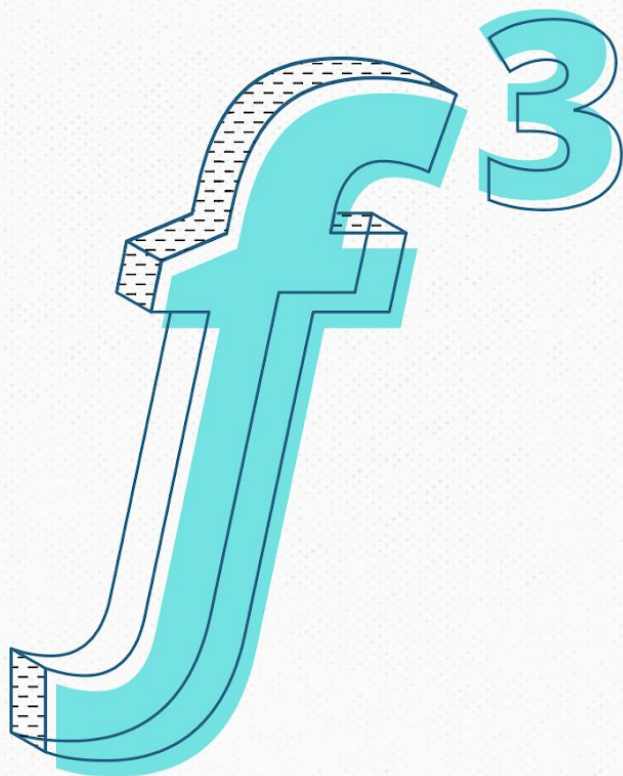
GROWTH

- 1| **STARTUPS** selling between CLP 80M - \$800M (\$100k USD - \$1000k USD *approx.*)
- 2| **THE TEAM LEADER** must have at least a 10% equity in the business
- 3| **THE TEAM LEADER** must have an exclusive dedication to the program and company
- 4| **THE TEAM LEADER** must be in Chile for the program.
- 5| **INDIVIDUALS** who are partners or founders of companies incorporated in another country, who use Chile as a platform to grow.
- 6| Must demonstrate sales invoiced in the 12 months before the opening of this line of at least USD 100.000 (approx) and up to USD 1 million.

OUR PROGRAMS



FEMALE FOUNDER FACTOR



WE UNDERSTAND THAT
WOMEN PLAY A KEY ROLE IN
THE BUSINESS FORMULA

**THAT IS WHY WE ENHANCE
FEMALE ENTREPRENEURSHIP**

**ACROSS ALL OUR PROGRAMS
AND ACTIVITIES.**



MEDIA

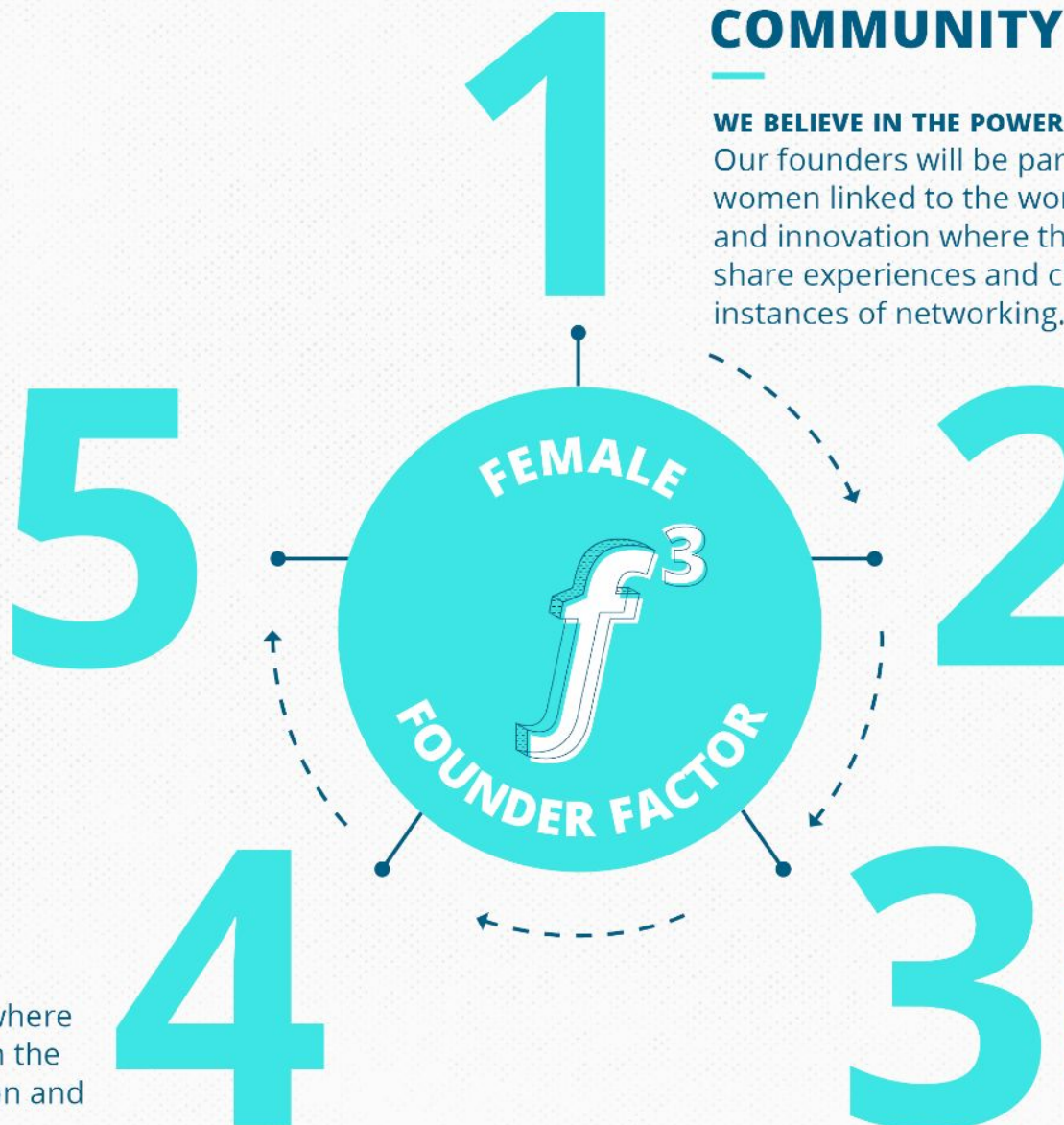
THERE IS A GAP IN FEMALE REPRESENTATION IN THE MEDIA, AND THIS INDUSTRY IS NO EXCEPTION

That is why as an organization we have an exclusive section in our channels to make female entrepreneurs and related topics visible, in addition to maintaining gender parity in the exposure that our startups receive.

ECOSYSTEM

AT START-UP CHILE WE ARE SPECIALISTS IN GENERATING IMPACT CONNECTIONS

Once a year we have our Female Circle where female leaders and representatives from the entire ecosystem meet around innovation and entrepreneurship.



1 COMMUNITY

WE BELIEVE IN THE POWER OF NETWORKING

Our founders will be part of a community of women linked to the world of entrepreneurship and innovation where they will be able to share experiences and challenges in different instances of networking.

2 ACADEMY

WE KNOW HOW IMPORTANT IT IS FOR OUR FOUNDERS TO HAVE FEMALE ROLE MODELS AND REFERENCES

that is why our academy has an equal number of speakers, as well as two extra meet-up style sessions with high-impact female entrepreneurs.

3 ACCELERATION

FEMALE REPRESENTATION IN THE ECOSYSTEM IS ONE OF OUR CHALLENGES

For this reason, we ensure mentors on the boards of women-led startups.



Our
OFFER

1 RESOURCES

_Equity Free Funding: You will receive financial funding without the need of giving up shares of your company.

_Free cowork space: You will have access to our entrepreneurs exclusive cowork at Downtown Santiago

_Exclusive Perk deals: Up to USD \$300,000 in exclusive benefits and discounts with services such as AWS, HubSpot, Microsoft and more specific ones such as legal, accounting, hiring, design, marketing and more.

2 SOFTLANDING IN CHILE

_Softlanding program: 1 year work visa for the whole team and significant others, which can be extended in time. A painless paperwork process where you receive your Chilean ID and have the opportunity to open a bank account (personal and/or company) during the first 2 weeks of the program.

**once the sanitary and travel conditions permit*

3

ACCELERATION

_SUP Academy: Training program (workshops, talks and other learning experiences)

_SUP Boards: Advisory board of voluntary experts in your industry with whom you meet every month to receive their guidance and connections and also to demonstrate your progress throughout the program.

_Platoons: Monthly sessions to share progress and challenges between startup founders, who will provide feedback, advice, and tips where you can learn from other similar experiences.

_Pitch Training: Group sessions where you can train your pitching skills on different subjects such as sales, investor or a general pitch of your company.

4

COMMUNITY

_Events & Experience: Special invitations to relevant external and internal events, the chance to give back through our Founders Lab activities (local ecosystem support program) and invitations to different community events where you can bond and network with peers and relevant ecosystem players.

Check our last events [here!](#)

5

CONNECTIONS

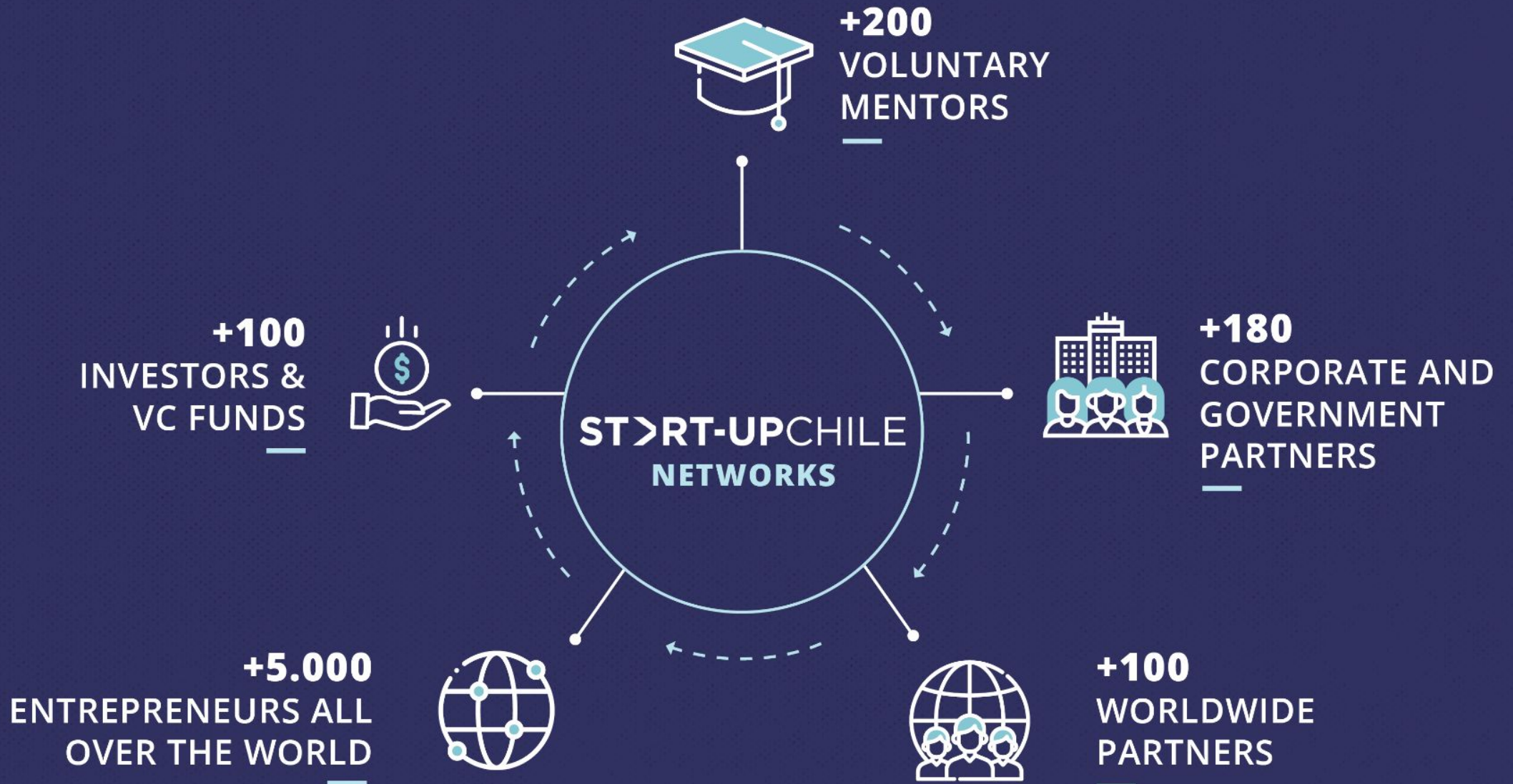
_Corporate Network: companies of all industries and sizes you can meet from feedback to business instances.

_Mentors Network: mentors and industry experts which offer their guidance and connections at zero cost.

_Investor Network: We coach you on how to reach VCs and connect you to +50 VC Funds and +50 angel investors from Chile and the world.

_Global Network: global connections which will support your international chances of success after the program: other accelerators, incubators, governments, embassies.

_Alumni Network: +5,000 alumni from over 85 countries.



WHY CHILE



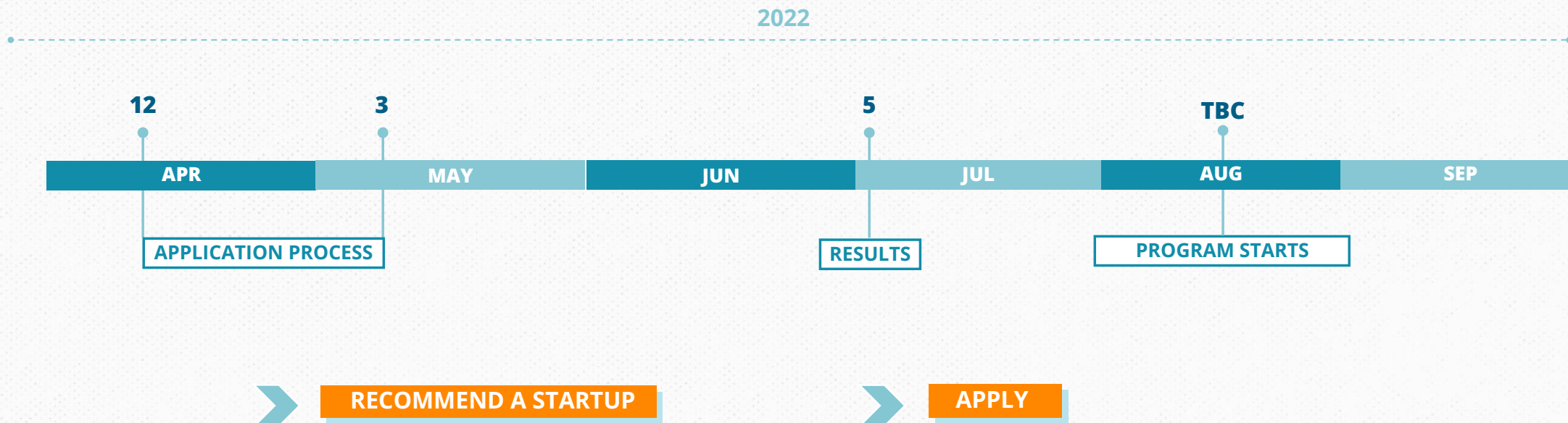


SUP ROCKSTARS



NEXT APPLICATION DATES

Build, Ignite & Growth - Generation 4



PREPARE YOUR APPLICATION!

Application form available in PDF

App Quest

Our Programs

- **Build:** Up to 1 year of development, 10 Million CLP in grant (around 13k USD), at least 50% of selected startups will have female founders. Around 40-50 startups will be selected.
- **Ignite:** Up to 3 years of development, 25 million CLP in grant (around 32k USD). Around 30-40 startups will be selected.
- **Growth:** Startups selling between CLP \$80M - \$800M, 75 Million CLP in grant (around 97k USD). Around 15-20 startups will be selected.

1. Which program(s) are you applying to? *
You can select as many as you want. If you meet the requirements for more than one program, we strongly recommend you to select all that apply. If your application has a good evaluation, Start-Up Chile's committee will decide in which program you'll be accepted.

Learn the benefits and requirements of each program [here](https://chady-files.s3.us-east-2.amazonaws.com/clients/startup_chile/big/2021_big3/Brochure+Start-Up+Chile+2021+(ENG)+(2).pdf) (https://chady-files.s3.us-east-2.amazonaws.com/clients/startup_chile/big/2021_big3/Brochure+Start-Up+Chile+2021+(ENG)+(2).pdf). Don't forget to check the [Terms and conditions](https://www.startupchile.org/terms-and-conditions/) (https://www.startupchile.org/terms-and-conditions/) of the program.

- Build
- Ignite
- Growth



AVAILABLE ON OUR WEBSITE
WWW.STARTUPCHILE.ORG



GET ACCESS TO ALL THE
QUESTIONS FOR BIG 4!

START-UPCHILE

www.startupchile.org



Start-Up Chile



startup_chile



@startupchile



Start-Up Chile Corfo



Start-Up Chile